



Central Region  
Schools Trust

*Founded by the RSA*

# 2026 ECT CONFERENCE

CENTRAL REGION SCHOOLS TRUST

MONDAY 5<sup>TH</sup> JANUARY 2026

ASSAY STUDIOS, NEWHALL STREET, BIRMINGHAM, B3 1SF

# KEY INFORMATION

Location



Assay Studios, Newhall Street, Birmingham, B3 1SF

Date



Monday 5<sup>th</sup> January 2026

Time



9.15am – 2.30pm

Catering



Breakfast: 9.15–9.45am  
Lunch: 12.15–12.45pm  
Please scan the QR to complete any dietary requirements



Parking



Please check the Birmingham Clean Air Zone charge in advance here. Please use the links below for advice on parking near Assay Studios:

[Newhall Street NCP](#)  
[Birmingham Parkopedia](#)  
[Your Parking Space](#)  
[Birmingham Jewelry Quarter Car Park](#)

Train/Foot



By Train & on-foot: Walking instructions from Birmingham New Street Grand Central Station Leave the station (towards Tesco Express side of station), not the main exit towards the Bullring Walk straight up Lower Temple Street leading onto Temple Street (there is a Tesco on your right at the corner of the cross junction) At the top of Temple Street is St Philip's Cathedral, walk over to Colmore Row take a left (away from the bus stops, towards Victoria Square) Turn right onto Newhall Street Walk for around 8 minutes. The front entrance is just before you hit Charlotte Street (The Co-operative and the Queens Arms Pub is opposite). Scroll down the intercom list and look for 'Central Region Schools Trust' or dial '20' and then press the call button to alert the CRST host Please do not tailgate through doors once inside. Take a seat and a host will collect you from the entrance area



# 2026 ECT CONFERENCE SCHEDULE

*"Supporting social justice through exceptional schools."*

| TIME                                      | FOCUS                                                                                                                                                     | LEAD(S)                                                       | ROOM                  |
|-------------------------------------------|-----------------------------------------------------------------------------------------------------------------------------------------------------------|---------------------------------------------------------------|-----------------------|
| 09:15<br>ARRIVAL<br>FOR<br>09:45<br>START | <b>Welcome</b><br>Purpose and outline of day                                                                                                              | <b>Teresa Wilson</b><br>Trust Lead - ITE & Early Career Stage | B06                   |
| 10:00                                     | <b>Keynote Address</b><br>Planning well informed and pupil centered lessons/resources with a focus on high expectations                                   | <b>Sam McMonagle</b><br>Director of School Improvement        | B06                   |
| 10:45                                     | <b>Break</b>                                                                                                                                              |                                                               |                       |
| 11:00                                     | <b>Workshop 1</b><br>ECT 1 (EY-Y6) Positive behaviour management<br>ECT 1 (KS3-5) Questioning & Instruction<br>ECT2 Teacher workload/sustainable teaching | Lauren Stewart<br>Jenny Lewis<br>Jenna Brown                  | COPPER<br>GOLD<br>B06 |
| 12:15                                     | <b>Lunch</b>                                                                                                                                              |                                                               |                       |
| 12:45                                     | <b>Workshop 2 - SEND Strategies (by Phase)</b><br>First School EY-Y4<br>Middle School Y5-8<br>Secondary/High School Y7-11                                 | Dani Duignan<br>Michael Williams<br>Laura Davis               | COPPER<br>GOLD<br>B06 |
| 14:00                                     | <b>Closing Comments</b>                                                                                                                                   | Guy Shears<br>Executive Principal (CEO)                       | B06                   |
|                                           | <b>Key takeaways &amp; Evaluation</b>                                                                                                                     | Teresa Wilson                                                 |                       |
| 14:30                                     | <b>ECT Places Project</b> (Y1 only) Y2 to leave at this time                                                                                              | Guy Shears                                                    |                       |
| 14:45                                     | <b>CLOSE &amp; Networking</b>                                                                                                                             |                                                               |                       |

# 2026 ECT CONFERENCE FACILITATORS

*"Supporting social justice through exceptional schools."*

**Teresa Wilson** - Trust Lead ITE & Early Carer Stage  
CRST

**Sam McMonagle** - Director of School Improvement  
CRST

**Guy Shears** - Executive Principal (CEO)  
CRST

**Jenna Brown** - Senior Lead Practitioner  
Gospel Oak School

**Jenny Lewis** - Trust Lead Ogden Partnership & Lead Practitioner  
Church Hill Middle School

**Michael Williams** - Vice Principal  
Ipsley CE Middle School

**Lauren Stewart** - ITT Mentor & Maths Lead  
Abbeywood First School

**Dani Duignan** - Trust Reading Lead & SENDCo  
Sutton Park Primary School

**Laura Davis** - SENDCo  
Arrow Vale High School





# WORKSHOP 1 - BY ECT YEAR

*"Supporting social justice through exceptional schools."*

## **ECT 1 (EY-Y6) Positive behaviour management**

Lauren Stewart - COPPER

Alice Porter  
Natalie Marshall  
Charlotte Dorrell  
Danielle Wallace  
Bethany White  
James Dove  
6

## **ECT 1 (KS3-5) Questioning & Instruction**

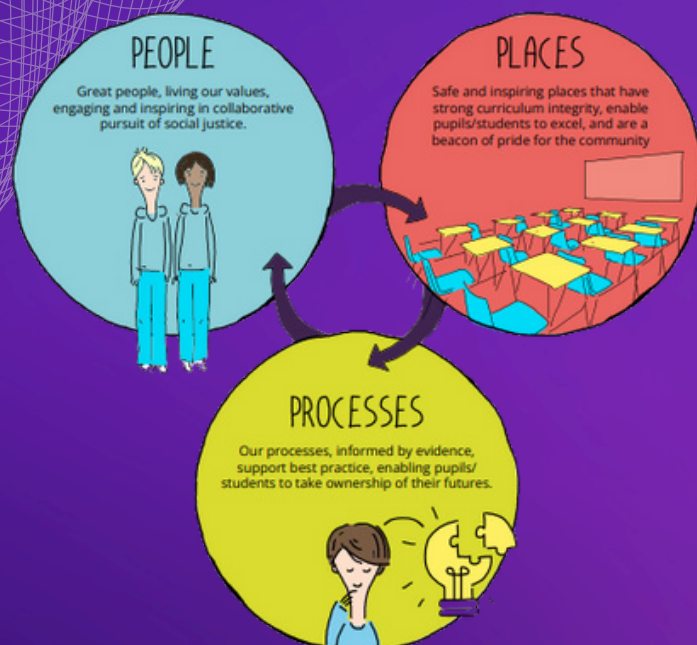
Jenny Lewis - GOLD

Vida Khoob  
Adam Hussain  
Randall Wickham  
Jessica Webb  
Megan Green  
Shukri Ahmed  
Soheir Bin-Smith  
Chloe Clements  
Mark Toor  
9

## **ECT2 Teacher workload/sustainable teaching**

Jenna Brown - B06

Megan Reid  
Olivia Borg  
Liam Turner  
Chloe Garey  
Emma Johnson  
George Mytton  
Mia Gibson  
Emily Arrowsmith  
Amy Hinchliffe  
Abigail Wilson  
Adeel Munir  
Bahja Hussein  
Maria Sacrieru  
Amna Mirza  
Jasjit Bharawal  
Jonathon Hulse  
Maddie Hedges  
Kiran Chowlia  
Lauren Ashfield  
Oliver White  
Emily Shelly  
Erin Wilkes  
Valeriia Nevskia  
Darragh Sheehan  
24



# WORKSHOP 2 - SEND

*"Supporting social justice through exceptional schools."*

## **First School EY-Y4**

Dani Duignan - COPPER

Alice Porter  
Charlotte Dorrell  
Danielle Wallace  
Bethany White  
James Dove  
Megan Reid  
Olivia Borg  
Liam Turner  
Chloe Garey  
9

## **Middle School Y5-8**

Michael Williams - GOLD

Vida Khoob  
Chloe Clements  
Mark Toor  
Natalie Marshall  
Emma Johnson  
George Mytton  
Jasjit Bharawal  
Jonathon Hulse  
Valeriia Nevska  
Darragh Sheehan  
10

## **Secondary/High School Y7-11**

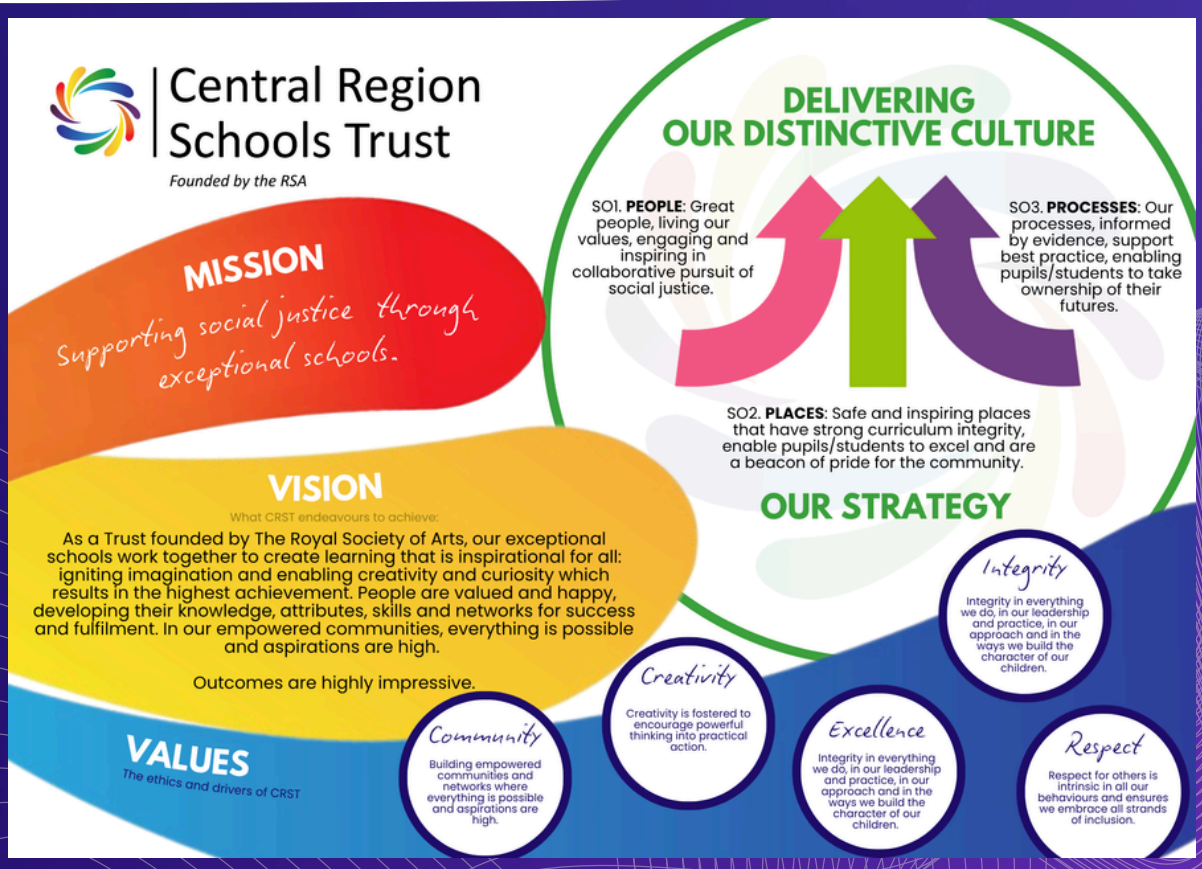
Laura Davis - B06

Adam Hussain  
Randall Wickham  
Jessica Webb  
Megan Green  
Shukri Ahmed  
Soheir Bin-Smith  
Mia Gibson  
Emily Arrowsmith  
Amy Hinchliffe  
Abigail Wilson  
Adeel Munir  
Bahja Hussein  
Maria Sacrieru  
Amna Mirza  
Maddie Hedges  
Kiran Chowlia  
Lauren Ashfield  
Oliver White  
Emily Shelly  
Erin Wilkes  
20





# MISSION, VISION, VALUES AND STRATEGIC OBJECTIVES



# OUR STAFF BEHAVIOURS



## Our Staff Behaviours

# Developing Our Distinctive Culture-People

We know and understand the powerful role we have in intentionally fostering Our Distinctive Culture through our behaviours and mindsets. These shape our thinking, communication and actions. We all encourage and empower others by being respectful, positive and optimistic.



**Integrity**



**Excellence**



**Creativity**



**Community**



**Respect**

The following behaviours will enable us to live out this vision and fulfil our mission of supporting social justice through exceptional schools.

### **Prioritise the success of our young people at all times**

All members of our community advocate on behalf of pupils/students and make decisions with them at heart. We have the highest expectations of all pupils/students and understand the importance of showing them how to achieve the habits that will lead them to success.

### **Be a role model**

We are ALL responsible for building our culture, trust and credibility. All members of our community need to walk the talk - all of the time. We all lead by example.

### **Communicate effectively**

Our staff are direct, honest, act with integrity and communicate appropriately all of the time. We use honest, timely and professional face to face communication as a priority.

### **Keep your promises and stick to your organisational commitments**

We see the importance of professional integrity and aim to keep our word around our organisational commitments.

### **Commit to the development of others**

Our community members are our most valuable asset. We all commit to our own professional growth in order to improve the outcomes for pupils. We see line management commitments as a priority and fully engage in the process.

### **Have a solution focused approach**

Our community have a positive can-do mindset and seek well thought through and appropriate solutions to problems. We are proactive and aim to prevent issues. We are committed to continually improving and seek constructive feedback.

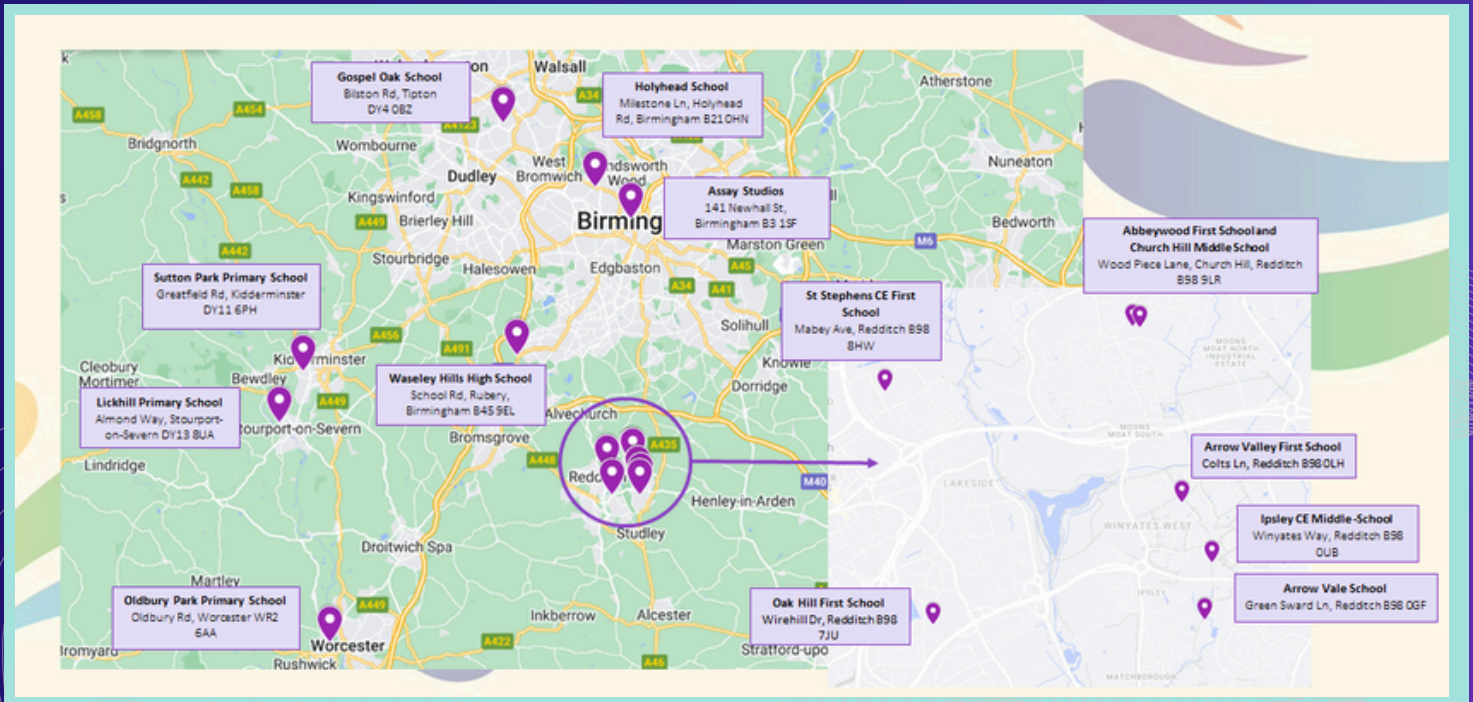
### **Demonstrate full commitment to the bigger picture**

Our colleagues demonstrate loyalty to the Trust. We challenge each other appropriately and support each other at all times. We show flexibility and a willingness to be adaptable or, where necessary, compromise.

[www.centralregionalschooltrust.co.uk](http://www.centralregionalschooltrust.co.uk)



# OUR TRUST SITES



# OUR TRUST NUMBERS



14

SCHOOLS



987

PROFESSIONALS



7,026

YOUNG PEOPLE

# NOTES





# NOTES



# EVALUATION



CRST CONFERENCES 2025-26 - FILL OUT FORM

Please use the above QR code or link to complete a short optional survey on your experience following the conference. Thank you.



"Supporting social justice through  
exceptional schools."

Community | Creativity | Integrity | Excellence | Respect



Central Region  
Schools Trust

*Founded by the RSA*



Suite B.06, Assay Studios, 141 Newhall Street,  
Birmingham, B3 1SF



0121 270 3117



[info@crst.org.uk](mailto:info@crst.org.uk)



[crst.org.uk](http://crst.org.uk)